



# XBO<sup>®</sup> 5000 W/HBM XL OFR

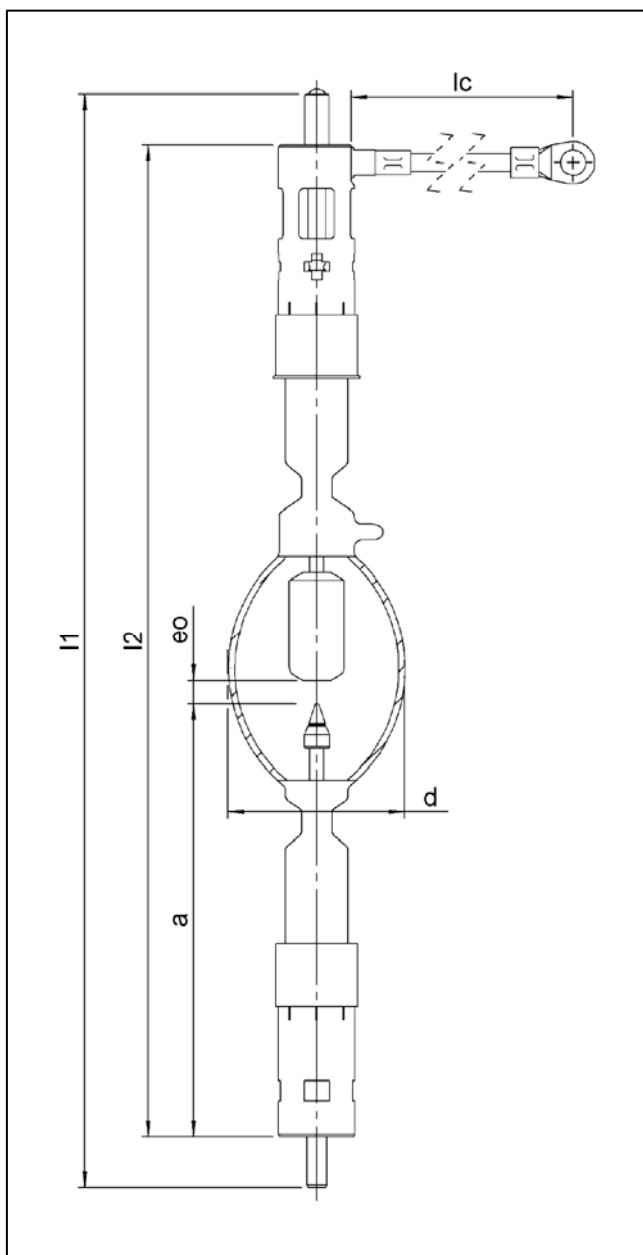
## ■ Product description

The OSRAM XBO<sup>®</sup> 5000 W/HBM XL OFR is a DC-operated lamp, developed with the latest high brightness technology for XBO lamps. The XL lamps, which stands for Xtreme life, are strictly optimized on performance and have an increased warranty up to 50%.

## ■ Technical data

Order reference	XBO <sup>®</sup> 5000 W/HBM XL OFR	
Rated lamp wattage	W	5000
Rated lamp voltage	V	34
Rated lamp current (=)	A	140
Current control range	A	100 - 150
Ignition voltage	kV <sub>P</sub>	36
Min. open circuit voltage for cold / hot ignition	V	85 / 110
Luminous flux	lm	225000
Luminous intensity	cd	27000
Average luminance	cd/cm <sup>2</sup>	95000
Luminous area w x h *)	mm	2.2 x 6.5
Electrode gap e (cold)	mm	7,5
Lamp length (overall) l <sub>1</sub>	mm	max. 436
Lamp length l <sub>2</sub>	mm	max. 393
LCL a	mm	170,5
Bulb diameter d	mm	70
<b>Warranty</b>	<b>h</b>	<b>1200</b>
Base	Cathode:	SFaX 30-7,9
	Anode:	SFa X 30-9,5
Cable length l <sub>c</sub>	mm	400

\*) w = luminance half width value; h = height of luminance area (corresponds to electrode gap, hot)



## ■ Lamp operation

Maximum permissible base temperature	230°C
Cooling	forced cooling / fan
Min. air flow velocity around discharge vessel	6 m/s
Magnetic arc stabilization	necessary for horizontal operation
Burning position	s 15 (vertical ± 15° ; anode up) ; p 15 (horizontal ± 15°)